



Luray
60 x 32 x 80
Tub/Shower

Available in white
Quick Ship in 7 days

Features

- Combination bathtub and shower
- Sturdy tub/shower base with textured floor, and ergonomic backrest
- Accessory shelves & tub deck provide ample space for bodywash and shampoo bottles
- Simple, easy, one-piece installation, no walls to fit together, no caulking of seam lines
- Accommodates a tub/ shower door
- Double thick ArmorCore reinforced walls for extra strength that enables bars to be located to fit your individual needs.
- Premium, durable applied acrylic/fiberglass construction
- Subway tile pattern is stylish and easy to clean
- 3 grab bars, and curtain rod included
- Limited Lifetime Warranty
- Meets or exceeds UPC, IPC, ANSI Z124.1, HUD
- Made in the USA



Components Included (Field Installed)

☆ Stainless Steel Curtain Rod



☆ Three 24" Stainless Steel Grab Bars



☆ Double Thick Reinforced Walls



☆ Made in the USA

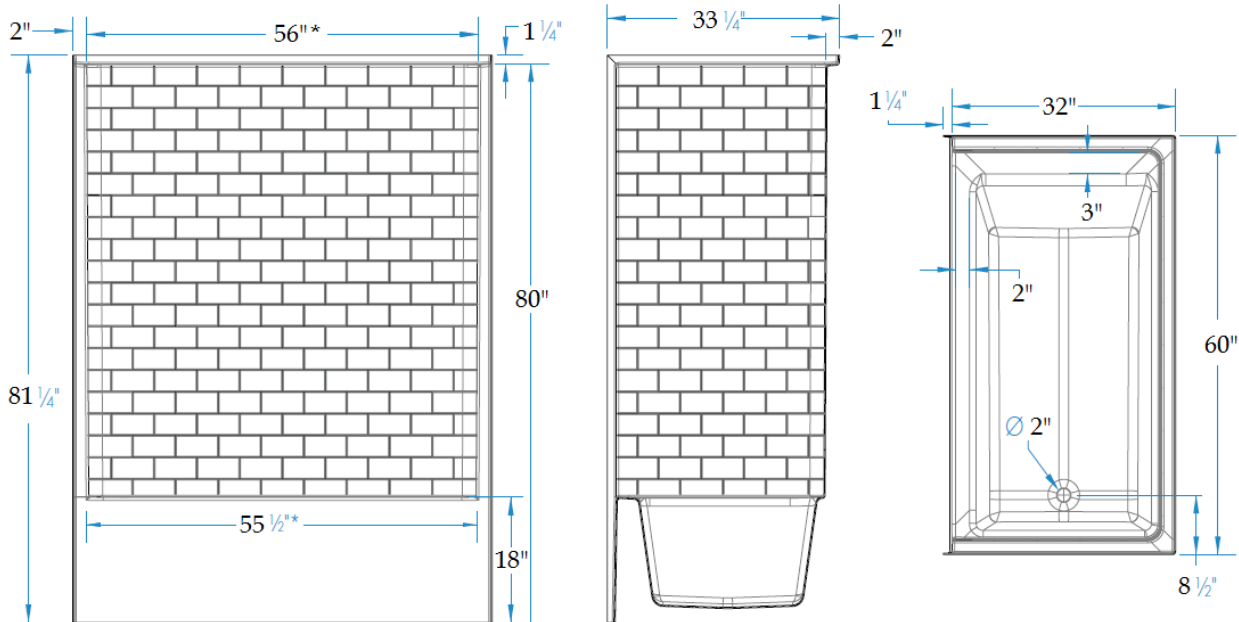


Drain	Model #	Item #
RH Drain	LM6032TS1PSTR064	1295754
LH Drain	LM6032TS1PSTL064	1295753

HANDED BY DRAIN

LURAY

LM6032TS1PSTR/L064



FEATURES lbs Dimensions needed for site preparation should be measured from the unit. Laurel Mountain assumes no responsibility for preparatory work.

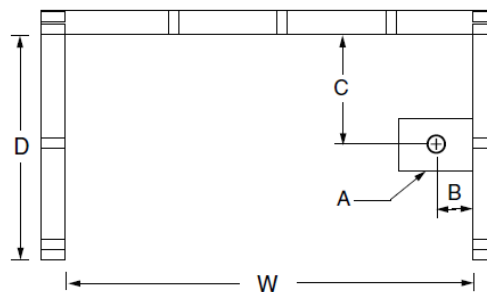
Model #	Material	Wall Finish	Drain	Net Wt.	Pkg. Wt.
LM6032TS1PSTR/L064	AcryliX	Subway Tile	LH or RH	229	234

DIMENSIONS

Specifications	inches
Width: Overall / Net	60
Depth: Overall / Net	32 / 33 1/4
Height: Overall / Net	81 1/4 / 80
Enclosure Opening	55 1/2 -56 drafted
Skirt Height	18
Drain Rough-In (from Back Wall)	16
Drain Rough-In (from Side Wall)	2 5/8
Drain: Diameter / Clearance	2 / 3/4

FRAMING DIMENSIONS inches

Type	D Depth	W Width	H Height	A	B	C
Alcove	33 1/2	60 1/8	-	Box Out	2 5/8	16



SUMP DATA

Top of Drain to Bottom of Overflow	Capacity to Overflow gal	WIDTH @ centerline		DEPTH @ centerline	
		Top	Bottom	Top	Bottom
12 5/8	52	49 3/8	42 1/4	25 1/8	21 3/8



Toll Free: (800) 930-0050
 Fax: (800) 930-0051
www.laurelmountainwhirlpools.com

LAUREL MOUNTAIN

LM6032TS1PSTR/L064

Date: 11/13/18

LURAY